

# Impact Report

SUPPORTING COMMUNITIES  
2025

[www.boxofhope.org](http://www.boxofhope.org)

# Community support at its best...

We often say that our work is only possible because of our community, and in 2025 this could not have been more true. Thanks to the dedication and generosity of our supporters, we shared gifts with 37,029 children across Hong Kong, Cambodia, the Philippines and Pakistan.

In 2025, donors and volunteers helped thousands of children experience the joy of receiving a gift during the festive season. Many of the children we reach rarely receive gifts for birthdays or special occasions, which makes each one especially meaningful.

As hardship grew in 2025, we received more gift requests from long-standing partners, as well as new charities seeking help.

Tragic events deeply affected some of the communities we support, including a deeply destructive fire in Tai Po and ongoing border conflict in Cambodia. Alongside gifts, we shared extra hygiene items with local groups in Tai Po, while two partner charities in Cambodia — This Life and Mother's Heart — brought comfort to families in rural areas through gift distributions.

We were also grateful for the chance to brighten the days of Hong Kong's elderly community by donating sets of playing cards to care homes and centres.

A key part of our mission is helping Hong Kong students learn about thoughtfulness, generosity and kindness. We were thrilled to welcome schools new to Box of Hope, and moved by the financial and in-kind donations from students who organised their own campaigns.

Local businesses also strengthened our work, with corporate teams joining the gift-checking process and donating items such as stationery, hygiene essentials and toys.

We feel incredibly lucky to have the steady help of committed volunteers — including friendly faces who join us almost daily — supporting every step of the gift-preparation process.

And finally, heartfelt thanks go to our team, board and sponsors for their energy, time and care. It truly takes a community to make this possible.

Lisa Beattie  
CEO, Box of Hope



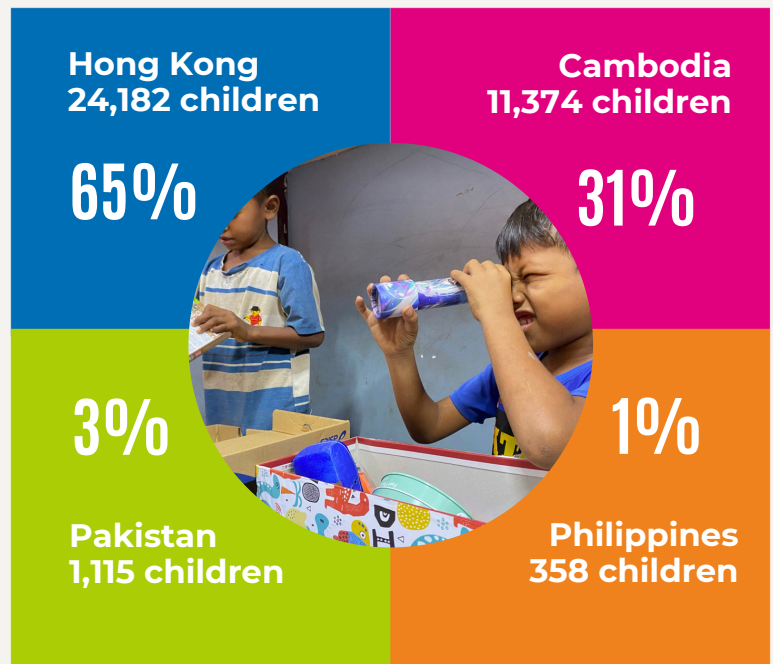
# With Your generosity, we supported...

## 37,029 Children

experienced the excitement of receiving a gift, donated by Hong Kong school students, individuals and the local business community.

## 86 Charity Partners

assisted in receiving and distributing gifts to children and families, on behalf of Box of Hope, across Asia.



# We thank you immensely for your support...



## 177

**Supporting schools/  
campus locations**  
(32,452 gifts = 87.64%)



## 64

**Corporates**  
(4,577 gifts = 12.36%)



## 453

**Volunteers**



## 23

**In-kind Donors**



# Words from our amazing supporters and volunteers

## From our Corporate Supporters

“Partnering with Box of Hope has been truly meaningful for our team. Our volunteers came together to prepare each gift with care, knowing it will bring warmth and encouragement to a child in need. It’s a powerful reminder that when businesses and charities join hands, small actions can create a lasting impact.”

Gloria Shiu, Marketing Director  
7-Eleven, Hong Kong & Macau

## From the Children That Give

“Box of Hope is a wonderful charity, where time flies by when you are volunteering and actively helping others. Packing a gift box really makes me feel like I am making a real difference. I’m happy to think of all the kids opening their gifts and the smiles on their faces.”

Luke Janikowski  
Y10, ESF Island School, Hong Kong

## From our Gift Checking Volunteers

“This was my first time volunteering with Box of Hope. I had donated gifts previously but hadn’t appreciated the logistics and effort that goes on behind the scenes. The scale and generosity of donations is amazing! I really enjoyed my time - it’s a fun and collegial environment and really brings on the festive spirit of giving, knowing that each gift is going to make a child really happy.”

Audrey Coker Howard  
Volunteer



# Our Gifting Experience

## Some heartwarming words from our Beneficiaries

“We are truly grateful for our partnership. Receiving these gifts has brought immense joy and “festive sparkle” to the children and families in our community. These boxes represent much more than physical items; they are a powerful reminder to our beneficiaries that they are cared for and supported by the wider community.”

Nancy Chun  
Caritas Community Centre, Hong Kong

“Thank you so much for the continuous support from Box of Hope to Christian Action. Because of your generosity, the children we serve enjoy a wonderful Christmas every year.”

Marco Lam  
Christian Action, Hong Kong

“Thank you all for making our Mothers' holiday season a festive and sparkly one. They were surprised as always to receive your practical baby gifts and to be able to utilize them right away.”

Martha E,  
Pathfinders, Hong Kong

“Your gifts are incredibly important right now, as we work to support mothers and babies —both those in our program and others—who have had to evacuate homes due to border conflict. Your thoughtfulness in making sure the gifts are just right for both the mothers and the babies is truly inspiring.”

Zarah Rushworth  
Mother's Heart, Cambodia



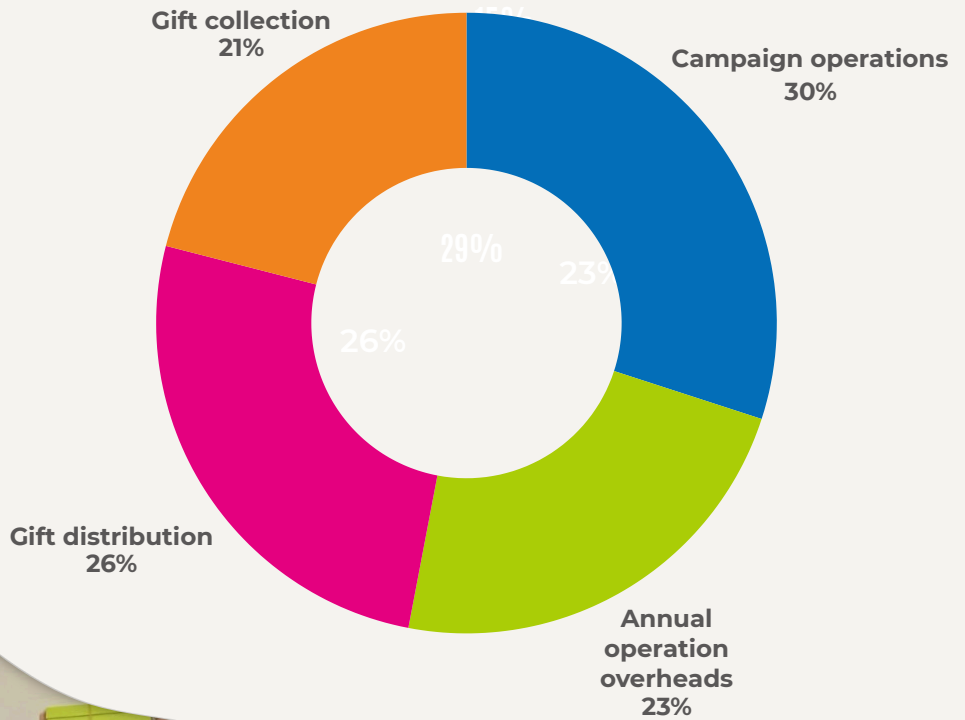
# Where Your Giving Goes

# 77%

of our financial donations go straight into making our annual gift campaign happen.

Based upon approx \$1.15m HKD income for FY2025

# Our Cost Allocation



# Our Vital Charity Partnerships

## Our network of support in Hong Kong

Asbury Methodist Social Service  
Asian Outreach  
Be The Change  
Branches of Hope  
Caritas Community Centre  
Caritas Hong Kong (Healthy Neighbourhood Kitchen Project)  
Caritas Jockey Club Integrated Service for Young People  
Caritas Lok Yi School  
Chai Wan Baptist Church Social Service  
Changing Young Lives Foundation  
Chicken Soup Foundation  
Christian Action  
Christian Church of Divine Providence  
Christian Family Service Centre  
Community Care Limited  
Crossroads Foundation  
Deeper Life Foundation  
Evangelical Free Church of China  
Emmanuel English Church (Homework Club)  
Feeding Hong Kong  
Foodlink Foundation  
Free Methodist Church of Hong Kong  
Fu Hong Society  
Grace & Joy Church  
Gracious Shepherd Christian Church Neighbourhood Centre  
Harmony House  
Heep Hong Society  
Hong Kong Sheng Kung Hui Service Centres  
Home Care for Girls  
Hong Kong ABWE Social Service  
Hong Kong Children & Youth Services Residential Care Centres  
Hong Kong Council of Early Childhood Education and Service  
Hong Kong Evangelical Church Yan Lam Community Service Centre  
Hong Kong New Immigrant Service Association  
Hong Kong Society for the Protection of Children  
IBEL Rusy and Purviz Shroff Charitable Foundation Kindergarten  
Inner City Ministries  
Integrated Brilliant Education Centre  
J Life Foundation  
Justice Centre  
Love 21 Foundation  
Methodist Epworth Village Community Centre  
Mission to New Arrivals  
Mother's Choice - Safe Families  
Music Children Foundation  
Muslim Community Kindergarten  
New Home Association



# Our Vital Charity Partnerships

Open Door Ministries  
Pathfinders HK  
People Service Centre  
Po Leung Kuk - Childrens' Services & Women's Refuge Centres  
Po Leung Kuk & Sprouts Foundation Education Service Centre  
Precious Blood  
Project Care  
Refugee Union  
RUN - Rehabilitating Refugees through Running & Beyond RUN  
Sai Kung District Community Centre  
Sisters of the Good Shepherd Marycove Centre  
Social Work Dream Community Service Centre  
SOCO - Society for Community Organisation  
Sons and Daughters  
Special Educational Needs and Parents Association  
St Barnabas (SBSH Kids Learning Club)  
St Stephen's Society  
Tai Kok Tsui Church of Foursquare Gospel  
The ABM Hong Kong Swatow Baptist Church  
Community Service Association  
The Devesh Samtani Foundation  
The Home of Loving Faithfulness  
The Hong Kong Council of The Church of Christ in China Family Web  
The Hong Kong Society for Asylum-Seekers and Refugees  
The Hong Kong Student Aid Society  
The Hub HK  
The Salvation Army  
The Zubin Foundation  
TREATS, Hong Kong  
Tung Wah Group of Hospitals Residential Child Care Service  
Yan Kwong Social Service Centre

## Supporting Cambodia, Pakistan & The Philippines

### Cambodia

Angkor Hospital for Children  
Cambodian Children's Fund  
Children's Surgical Centre  
Damnok Toek  
M'Lop Tapang  
Mother's Heart  
People's Improvement Organisation  
The Rabbit School  
This Life

### Pakistan

All Brother Welfare Trust  
Deeper Life Foundation

### Philippines

Bahay at Yaman ni San Martin de Porres, Inc. (St. Martin)  
Bethlehem House of Bread  
Dolly

## Supporting Children in Need

“Every year, our children and youngsters are looking forward to the arrival of Box of Hope. These presents mean a lot to them.”

HK Student Aid Society



# Thank you to our Hong Kong School Community

1<sup>st</sup> Island Sandilands Brownie Pack  
Abacus International Kindergarten  
Acorn Playhouse  
American School Hong Kong  
Anfield Int'l Kindergarten & Primary School  
Australian International School  
Bayview House of Children  
Beacon Hill School  
Bloom KKCA Academy  
Box Hill (HK) Int'l Kindergarten & Pre School  
Bradbury School  
Braemar Hill Nursery School  
Bui O Public School  
Canadian International School  
Carmel School  
Causeway Bay Victoria Kindergarten  
Chi Yun School  
Christian Alliance P.C. Lau Memorial Int'l School  
City Kids  
Clearwater Bay  
Creative Kindergarten & Primary School  
CWSA St Anthony's Primary School  
Dalton School Hong Kong  
DB Girl Guide Group  
Diocesan Boys School Primary Division  
Discovery Bay International School  
Discovery College  
Discovery Minds  
Discovery Montessori Academy  
Discovery Montessori School  
DMHC Siu Ming Catholic Secondary School  
EIS International Preschool  
ELCHK Lutheran Academy  
ELCHK Lutheran School  
Elsa High School  
ESF Jockey Club Sarah Roe School  
ESF Language & Learning Centre  
ESF Tsing Yi Kindergarten

Evangel College  
Fairchild Kindergarten & Junior Academy  
French International School  
Fukien Affiliated Secondary School  
Galilee International School  
German Swiss International School  
Glenealy School  
Greenfield English Int'l Kindergarten  
Han Academy  
Harrow International School Hong Kong  
Highgate House School  
HKCA PLK School - Primary School  
Hong Kong Academy  
Hong Kong Baptist University Affiliated School  
Hong Kong Int'l Learning Academy  
Hong Kong International School  
Hong Kong Japanese School  
Hong Kong Pre-school & Play-school  
Independent Schools Foundation  
International College Hong  
Invictus School Hong Kong  
Jing Jing International Kindergarten  
Jonathan Innovative English Kindergarten  
Joyful World Int'l Nursery & Kindergarten  
Quarry Bay School  
Renaissance College  
Sacred Heart Canossian School  
Sai Kung International Pre-school  
San Wui Commercial Society  
Sha Tin Junior School  
Shatin College  
Shrewsbury International School  
Silvermine Bay School



# Thank you to our Hong Kong School Community - cont'd

Singapore International School  
SKH Kei Oi Primary School  
SKH Kei Yan Primary School  
SKW Wei Lun Primary School  
Small World Christian Kindergarten  
South Island School  
Spanish School of Hong Kong  
St. Catherine's Int'l Kindergarten & Nursery  
St. Nicholas' English Kindergarten  
St. Patrick's Catholic Primary School  
St Paul's Day Nursery  
St Paul's Primary Catholic School  
St. Stephen College Preparatory School  
St. Teresa's Kindergarten  
Stamford American School  
Tai Kwong Hilary College  
The Harbour School  
The International Montessori School  
Tutor Time  
Victoria Kindergarten  
Victoria Shanghai Academy  
West Island School  
Wilderness International Kindergarten  
Woodentots Montessori  
Wycombe Abbey School Hong Kong  
Yew Chung International School  
YMCA of Hong Kong Christian School



# Thank you to our Corporate Community

## Our Corporate Supporters

7-Eleven Hong Kong & Macau, DFI Retail Group  
Alliance Bernstein Hong Kong  
Alvarez and Marsal  
Bank of Singapore  
Bird & Bird  
Blackrock  
BMO (Bank of Montreal HK)  
Brunswick Group Limited  
Burberry  
Capital International Limited  
CBRE Advisory Hong Kong Limited  
Clyde & Co  
Coface  
Deckers Asia Pacific Limited  
DHL Express (HK) Limited  
EIG Global Energy (Asia) Ltd  
Ernst & Young Advisory Services Limited  
Eversheds Sutherland  
Freshfields  
FWD Group Management Holdings Limited  
H&H Group  
Herbert Smith Freehills Kramer  
HSBC  
Jardine Matheson Limited  
Jones Lang LaSalle Limited  
JP Morgan Chase  
Kirkland & Ellis

Latham & Watkins LLP  
Lead8  
Lewis Silkin  
LGT Capital Partners  
Macquarie Group  
MinterEllison LLP  
Moody's Analytics Hong Kong  
Natixis Corporate & Investment Banking  
Odiy  
Pacific Prime  
PAG  
PineBridge Investments Asia Limited  
PJT Partners (HK) Limited  
RGA  
S&P Global  
Samsonite  
Sheffield Haworth  
The Land Registry Hong Kong  
TGI Technology Limited  
Two Sigma Asia Pacific Limited  
UBP (Union Bancaire Privée)  
UBS  
Walkers (Hong Kong)  
Wellesley Partners  
White & Case  
Yulan Group

## Our Key Campaign Sponsors

A&O SHEARMAN

CLIFFORD  
CHANCE

Gourami

**FWKK**  
ESTABLISHED SINCE 1963

 置地公司  
Hongkong Land

 THE  
LION ROCK  
PRESS



# Our Donors in-kind

Each year, we are fortunate to receive a number of donations-in-kind, which go along way in helping us support more children and families with gifts, and also make improvements to the quality of gifts where necessary.

This year, donations from lifestyle brands L'Occitane and Rituals, enabled us to add personal hygiene for teenage recipients, as well as provide 'little extras' to the parents and carers of the infants we support.

We were delighted to continue long standing relationships with Soap Cycling, Colgate Palmolive and The Amber foundation and new relationships with THP Dental Group who all provide invaluable personal and dental hygiene items, often missing from gifts.

As always, we love the support from individual volunteers and groups who spend time lovingly creating baby blankets, jewellery items, purses and bags - Dipa, Hong Kong Crafties and Mr & Mrs Wong - we couldn't do it without you.

A huge thank you to all our in-kind supporters. We love you being part of our community.

7-Eleven Hong Kong & Macau  
Aberdeen Marina Club  
Bookazine  
Colgate Palmolive  
Dipa  
Dutch Consulutate Hong Kong  
Hasbro  
Hong Kong Crafty Charity Volunteer Group  
Hong Kong Football Club  
Jason Fung  
Kukri  
Liz Fry Design  
L'Occitane

Paper Roses  
Rituals  
Rocksaaan  
Sally Sham  
Soap Cycling  
Swire Coca-Cola  
The Amber Foundation  
The Lion Rock Press  
The Wee Bean  
THP Dental Group  
Two Presents  
Wa Yuen Stationery  
Wendy Wong & Enrico Tsang





# Help us to bring more smiles to children in 2026

[info@boxofhope.org](mailto:info@boxofhope.org)

Box of Hope is run by an exceptional volunteer team who make the happiness flow each year. If you are interested in joining us, please contact [Lisa@boxofhope.org](mailto:Lisa@boxofhope.org)

## Follow Us



[@boxofhopehk](https://www.facebook.com/boxofhopehk)



[@boxofhopehk](https://www.instagram.com/boxofhopehk)



[@boxofhope](https://www.linkedin.com/company/boxofhope)



[www.boxofhope.org](http://www.boxofhope.org)